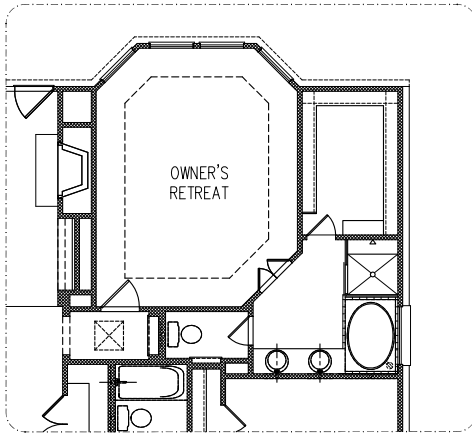
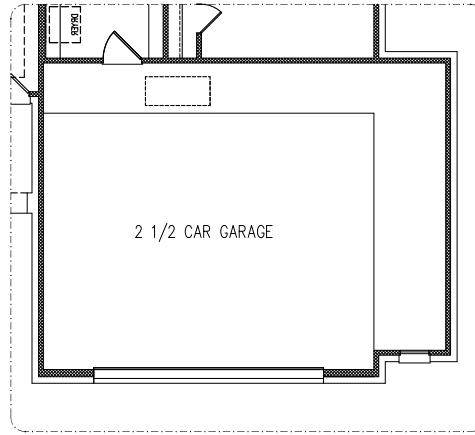


# KINSMEN HOMES

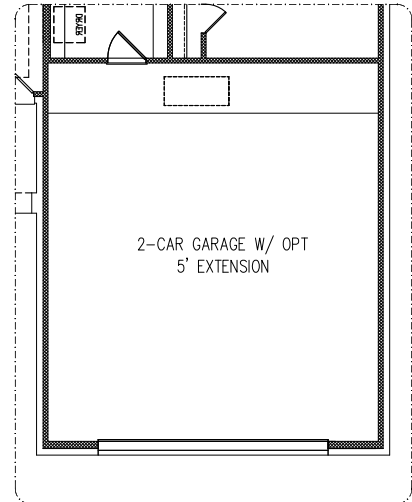
*Built on Family Values*



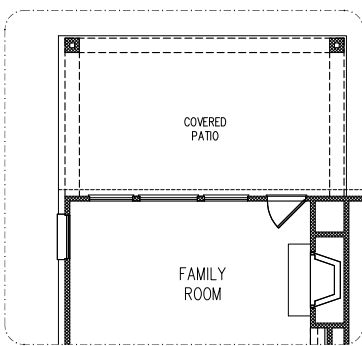
OPTIONAL BAY WINDOW



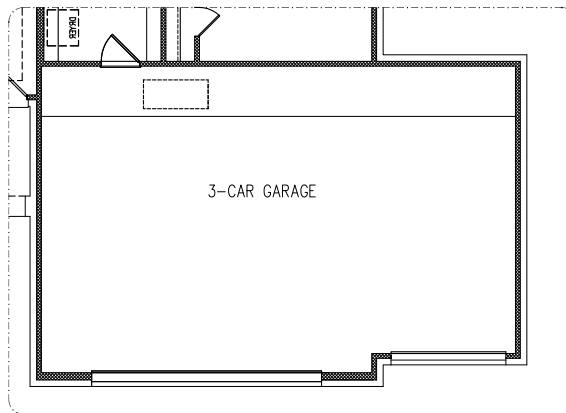
OPTIONAL 2 1/2 GARAGE



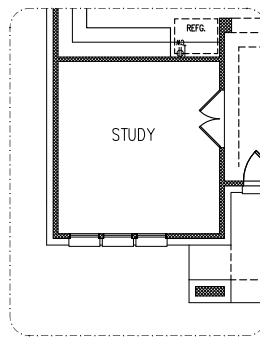
OPTIONAL 5' GARAGE EXTENSION



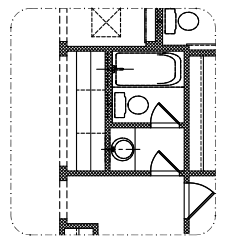
OPTIONAL COVERED PATIO



OPTIONAL 3 CAR GARAGE



OPTIONAL STUDY



OPTIONAL DESK

RENE

FLOORPLAN OPTIONS  
1792-AB